

# Municipal Forest Range



# Municipal Forest Range

## Forest Land

1,879.84ha (4,645.19 acres)

## Administration

Municipal Forest Range is divided into four blocks and thirty beats for administrative management purposes. It comprises of 30 forest compartments which are further divided into sub compartments for better management on silvicultural basis. One Range Forest Officer, one Range Clerk (RC), four block officers (BOs), thirty forest guards, five *chowkidars* and one peon are deployed by PFD to look after the matters of Municipal Forest Range.

## Locality

Geographically Municipal Forest Range can be described as;

East: Covered by private lands of villages of *tehsil* Murree, State Forests of Lower Topa/Sehr Bagla Forest Sub Divisions.

North: Private lands of District Abbottabad (KP), *tehsil* Murree, State Forests of Sehr Bagla Forest Sub Division/Forests of Cantonment Board Murree.

South: Private lands of villages of *tehsil* Murree, State Forest of Lower Topa/Ghora Gali.

West: Private lands of Murree villages, state lands of Brewery and forests of Ghora Gali Forest Sub-Division. Main Murree city and Cantonment area along with Cantonment Forest are the internal boundaries of Municipal Forest Range.

## Road Network

- a. Sixteen major roads pass through/along the forest areas of Municipal Forest Range i.e.
  - i. RMK
  - ii. IMDCW, commonly known as Murree Express Way
  - iii. Lawrence College bypass Road
  - iv. Link Road (IMDCW-Murree)
  - v. Bariyan Road
  - vi. Kohala Road
  - vii. Mora Sharif Road
  - viii. Nine TMA Murree Road
- b. Twenty other metalled roads run through these forests which also bisect the areas of different forest compartments and connect different villages of *Tehsil* Murree.
- c. So many numbers of non-metalled (*Kacha/shingled*) roads also pass through this Range. Most of these roads have been constructed illegally.
- d. Many other bridle/inspection paths/hiking tracks also exist in the area, which are used by the local population of the adjoining villages and Government Officials/visitors/tourists.

## Watershed-River/Nullahs

Forest areas of Municipal Forest Range fall in the main watershed/catchment area of River Indus (Khanpur Dam KP, Simli Dam-Rawal Dam) fed by Swan, Kurrang Rivers through sixteen major nullahs and other tributaries. Furthermore some nullahs/tributaries feed Jehlum river from this area contributes to Mangla Dam.

## Included Chaks

More than 12 chaks (local populations with private land ownership called “*Shikmi chaks*”) exist inside the forests of municipal forest range.

## Biodiversity

Municipal Forest Range is mainly comprised of pure Blue Pine/*Kail/Pinus wallichiana* and mixed forest of Chir Pine/*Pinus roxburghii*, Fir/*Abies pindrow*, Deodar/*Cedrus deodara* and Broadleaved species (*Rein/Quercus incana*, Ban Akhroot/*Aesculus indica*, Papular/*Populus alba Linnaeus*, Willow/*Salix acmophylla*, Rubinia/*Robinia pseudo-acacia*, and Ailanthus/*Ailanthus altissima*). Hundred per cent area of Municipal Forest Range is covered by the pure pine forest crop with the mixture of broadleaved species. 1,575.84 ha (3,894 acres) are declared as Reserved Forest and remaining 303.9 ha (751 acres) as Protected Forest category. Ghora Gali has frequently used terrain of Common Leopard. It has the Grey Goral, Rhesus Monkey, Koklass Pheasant and a wide variety of small mammals, reptiles, amphibians and birds.

## Legal Status of External Forest Boundaries

- i. Length of external delineated forest boundaries: 107.68 Km
- ii. Area of the delineated polygon is 2,160.98 ha (5,339.90 acres) which includes roads, rivers, nullahs, forest area, Included *Chaks* etc
- iii. Forest Boundary Pillars marked: 1,056
- iv. Forest Boundary Pillars newly constructed: 229
- v. No. of encroachers detected: 1,027
- vi. Area under the encroachment/adverse possession: 146.52 ha (362.08 acres)
- vii. No. of FIRs registered: 12
- viii. Area transferred to other departments: 80.45 ha (198.8 acres)
- ix. Area under Government Buildings: 4.04 ha (10 acres)
- x. Area of Leased out Land: 26.7 ha (66 acres)
- xi. Litigation/Civil suit cases: 18
- xii. Area retrieved form encroachers: 43.17 ha (106.675 acres)

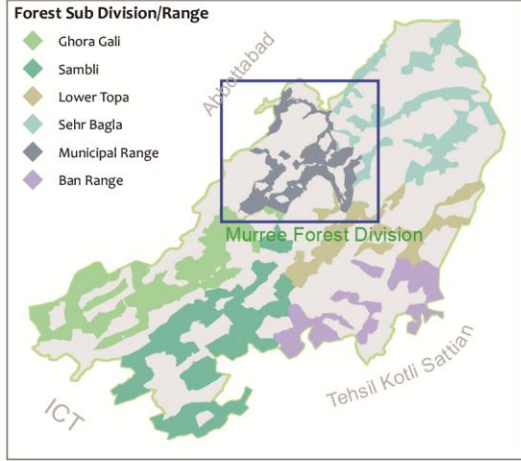




**Map Title**

GIS BASED BOUNDARY DELINEATION OF MURREE FOREST DIVISION INCLUDING THE ENCROACHED FOREST SECTIONS ENCROACHMENT MAP (1<sup>ST</sup> EDITION 2013) MUNICIPAL FOREST RANGE

**Map Locator**



**Map Legend**

- Locality
- Spot Height (m)
- Forest Bench Mark
- Road
- Forest Boundary
- Murree Forest Division
- Drainage/Water channel
- Water pond/tank

**Land Status**

- Municipal Forest Range
- Encroachment
- Leased Area
- Transferred Land/ Govt. Buildings
- Included Chak

**Map Scale & Coordinate System**

Reference Scale: 1:40,000 on A3 size paper

Coordinate System: GCS WGS 1984

Datum: WGS 1984

Grids and Graticule:

Geographic Grid: WGS 1984

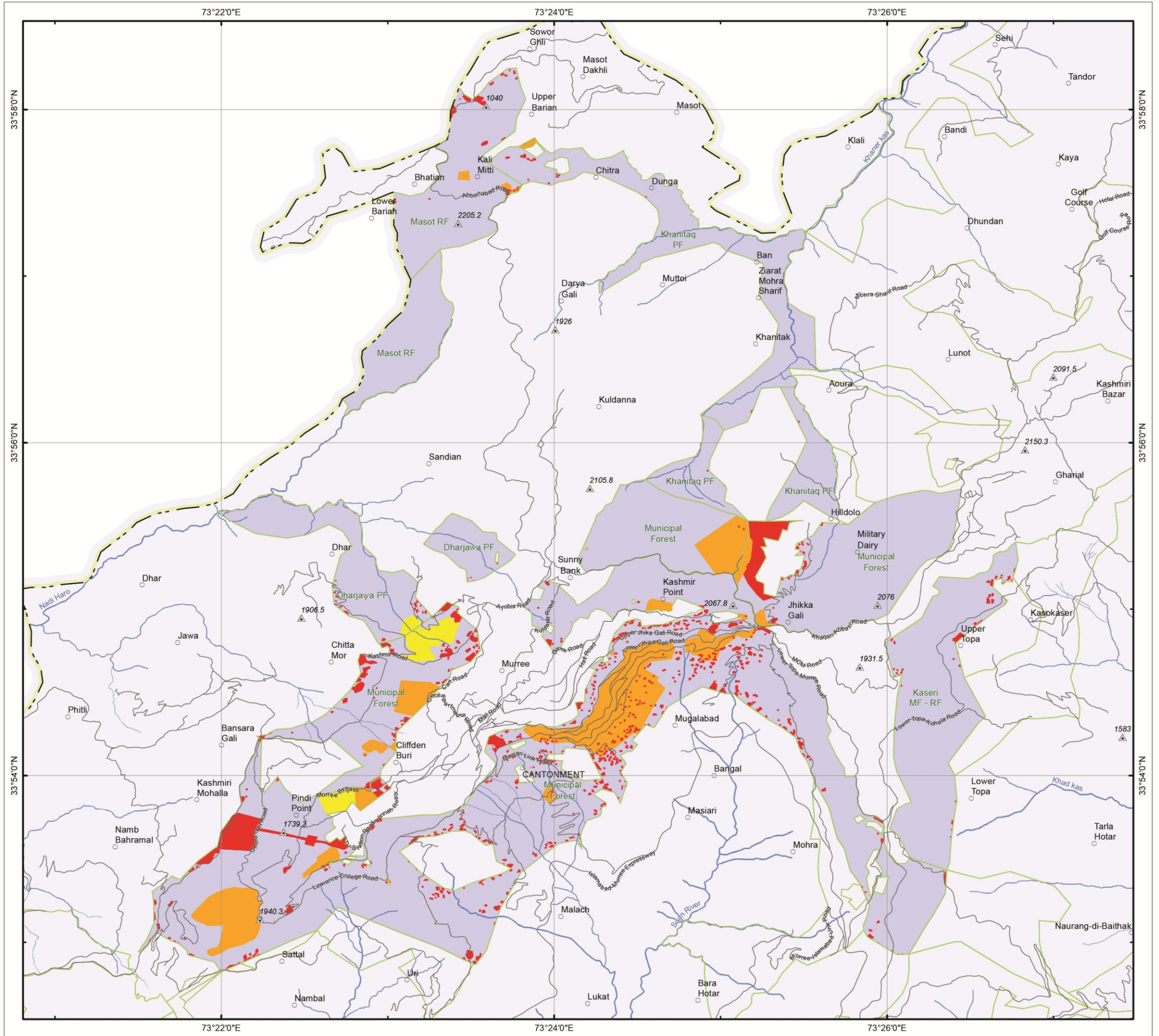
Value in: DD° MM' SS"



**Map Credits**

Map Produced by: GIS Laboratory, WWF - Pakistan in February, 2013

Copyrights:  
It is an offence under the Copyright Act to make and issue any copy or copies of this map or any part of this map with or without alterations and additions, unless the prior written permission of the concerned department has been obtained.





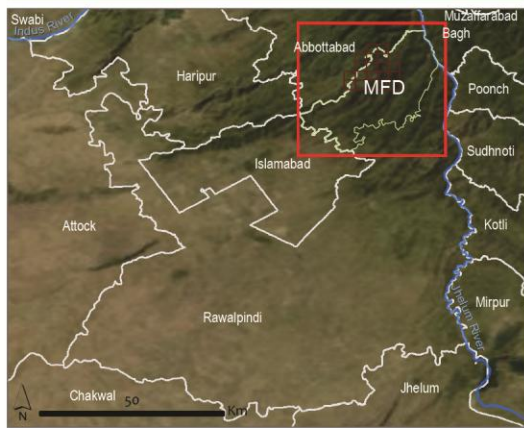
**Map Title**

GIS BASED BOUNDARY DELINEATION OF MURREE FOREST DIVISION INCLUDING THE ENCROACHED FOREST SECTIONS INDEX TO MAPS (1<sup>ST</sup> EDITION 2013) MUNICIPAL FOREST RANGE

**Map Locator**



**Map Index**



**Map Scale & Coordinate System**

Reference Scale: 1:130,000 on A3 size paper  
 Coordinate System: GCS WGS 1984  
 Datum: WGS 1984  
 Grids and Graticule:  
 Geographic Grid: WGS 1984  
 Value in: DD° MM' SS"

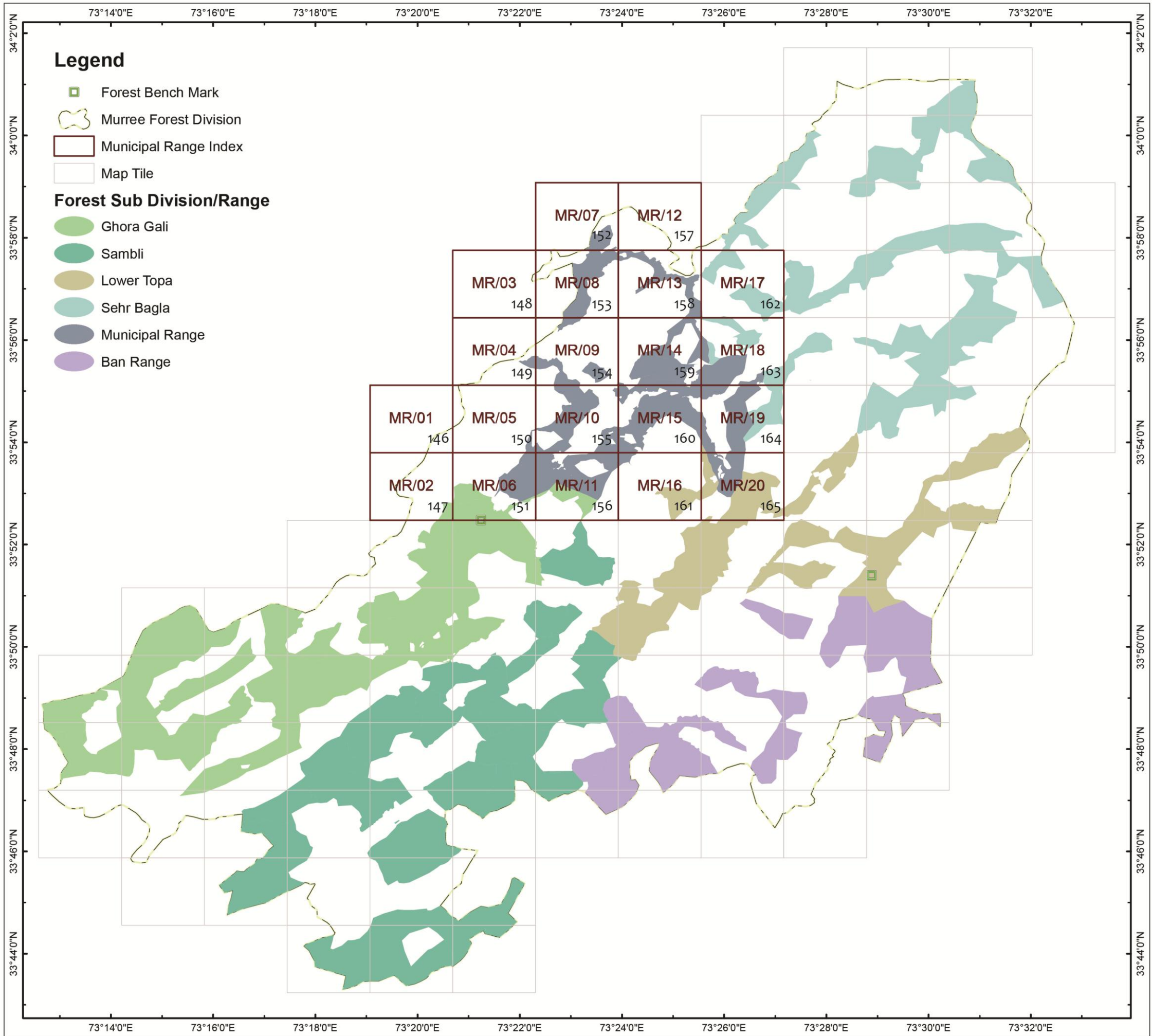


**Map Index Legend**

**Reading the Index**  
 MF/01 Map Tile ID  
 00 Map Page Number

**Map Credits**

**Map Produced by:** GIS Laboratory, WWF - Pakistan in February, 2013  
 Copyrights:  
 It is an offence under the Copyright Act to make and issue any copy or copies of this map or any part of this map with or without alterations and additions, unless the prior written permission of the concerned department has been obtained.





**Map Title**

GIS BASED BOUNDARY DELINEATION OF MURREE FOREST DIVISION INCLUDING THE ENCROACHED FOREST SECTIONS  
 MAP ID : MR/01 (1<sup>st</sup> EDITION 2013)  
 MUNICIPAL FOREST RANGE

**Map Locator**

**Forest Sub Division/Range**



**Map Index**



**Map Scale & Coordinate System**

**Reference Scale:** 1:10,000 on A3 size paper  
 1 inch ~ 278 yards or 1 centimetre ~ 100 metres  
**Coordinate System:** GCS WGS 1984  
 Datum: WGS 1984  
**Grids and Graticule:**  
 Geographic Grid: WGS 1984  
 Value in: DD° MM' SS"  
 Metric Grid: UTM Zone 43S  
 Value in: Metres



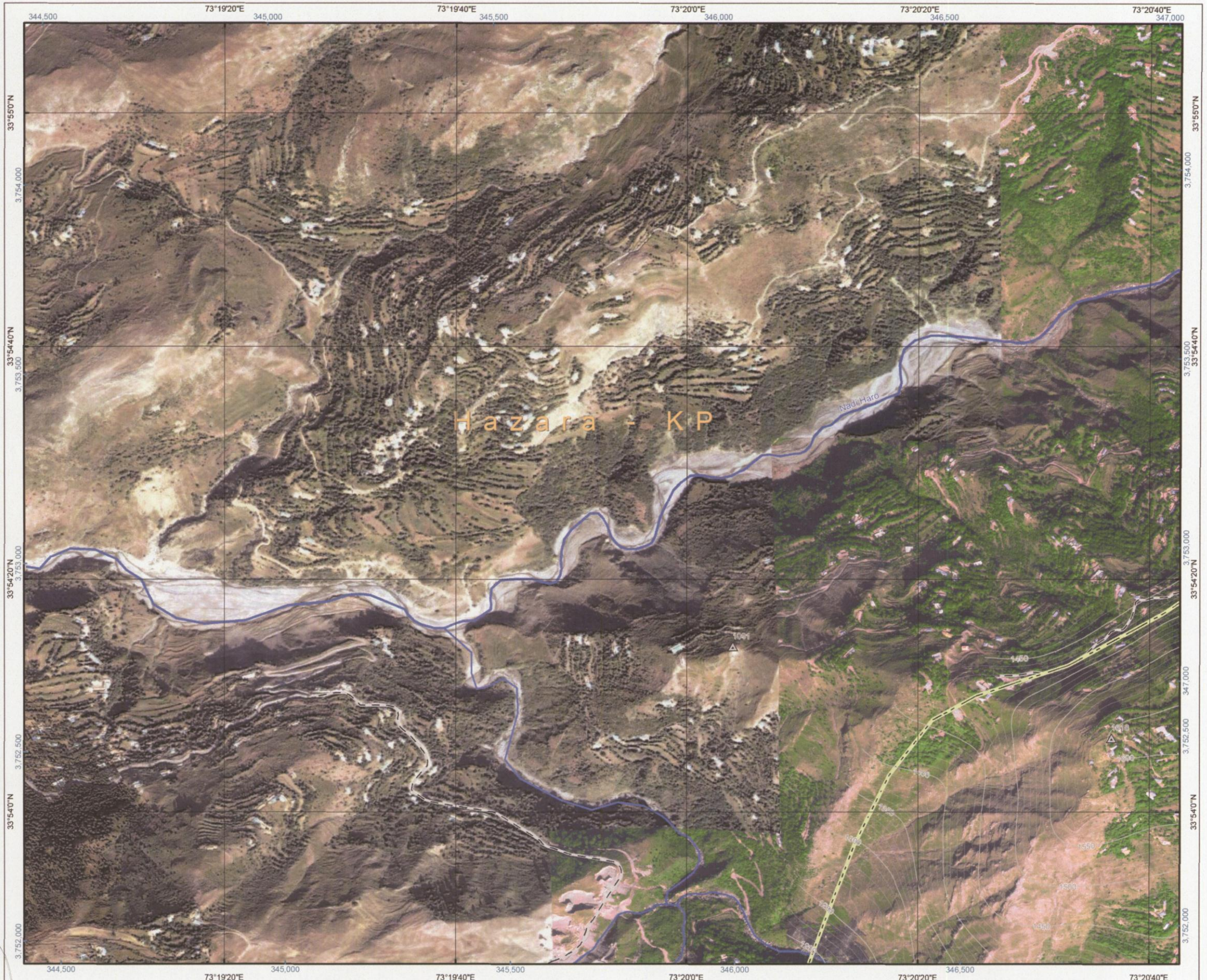
**Map Legend**

- Pillar Mark
- Forest Boundary
- Forest Bench Mark
- Ambiguity Area
- Sehadda
- Included Chak
- Spot Height (m)
- Murree Forest Division
- Road
- Water Channel/Nullah
- Contour (m)  
Contour interval: 50m (164 ft)
- Water Pond/Tank
- Encroachment

**Map Credits**

**Map Produced by:** GIS Laboratory, WWF - Pakistan in February, 2013

Copyrights:  
 It is an offence under the Copyright Act to make and issue any copy or copies of this map or any part of this map with or without alterations and additions, unless the prior written permission of the concerned department has been obtained.



**Divisional Forest Officer**  
 Murree Forest Division  
 Punjab Forest Department



**Officer-in-Charge**  
 No. 4 Party,  
 Survey of Pakistan, Murree



**Tehsildar Murree**  
 Punjab Revenue Department



**Manager GIS**  
 GIS Laboratory  
 World Wide Fund for Nature - Pakistan



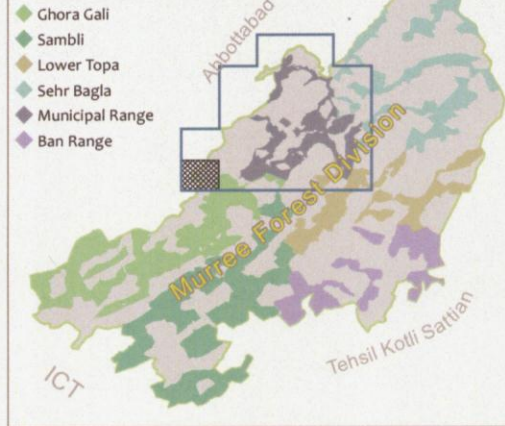


**Map Title**

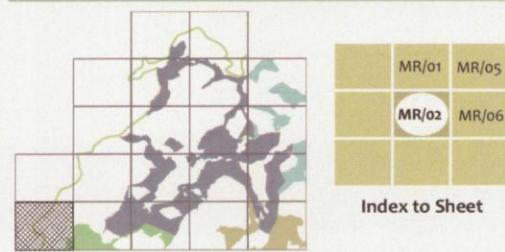
GIS BASED BOUNDARY DELINEATION OF MURREE FOREST DIVISION INCLUDING THE ENCROACHED FOREST SECTIONS  
 MAP ID : MR/02 (1<sup>ST</sup> EDITION 2013)  
 MUNICIPAL FOREST RANGE

**Map Locator**

**Forest Sub Division/Range**



**Map Index**



**Map Scale & Coordinate System**

**Reference Scale:** 1:10,000 on A3 size paper  
 1 inch ~ 278 yards or 1 centimetre ~ 100 metres  
**Coordinate System:** GCS WGS 1984  
 Datum: WGS 1984  
**Grids and Graticule:**  
 Geographic Grid: WGS 1984  
 Value in: DD° MM' SS"  
 Metric Grid: UTM Zone 43S  
 Value in: Metres



**Map Legend**

- Pillar Mark
- Forest Boundary
- Forest Bench Mark
- Ambiguity Area
- Sehadda
- Included Chak
- Spot Height (m)
- Murree Forest Division
- Road
- Water Channel/Nullah
- Contour (m)  
Contour interval: 50m (164 ft)
- Water Pond/Tank
- Encroachment

**Map Credits**

**Map Produced by:** GIS Laboratory, WWF - Pakistan in February, 2013

**Copyrights:**  
 It is an offence under the Copyright Act to make and issue any copy or copies of this map or any part of this map with or without alterations and additions, unless the prior written permission of the concerned department has been obtained.



**Divisional Forest Officer**  
 Murree Forest Division  
 Punjab Forest Department



**Officer-in-Charge**  
 No. 4 Party,  
 Survey of Pakistan, Murree



**Tehsildar Murree**  
 Punjab Revenue Department



**Manager GIS**  
 GIS Laboratory  
 World Wide Fund for Nature - Pakistan





**Map Title**

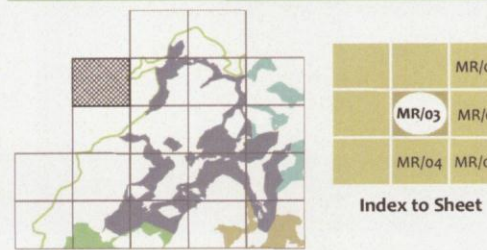
GIS BASED BOUNDARY DELINEATION OF MURREE FOREST DIVISION INCLUDING THE ENCROACHED FOREST SECTIONS  
 MAP ID : MR/03 (1<sup>st</sup> EDITION 2013)  
 MUNICIPAL FOREST RANGE

**Map Locator**

**Forest Sub Division/Range**

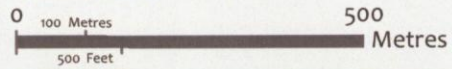


**Map Index**



**Map Scale & Coordinate System**

**Reference Scale:** 1:10,000 on A3 size paper  
 1 inch ~ 278 yards or 1 centimetre ~ 100 metres  
**Coordinate System:** GCS WGS 1984  
 Datum: WGS 1984  
**Grids and Graticule:**  
 Geographic Grid: WGS 1984  
 Value in: DD° MM' SS"  
 Metric Grid: UTM Zone 43S  
 Value in: Metres



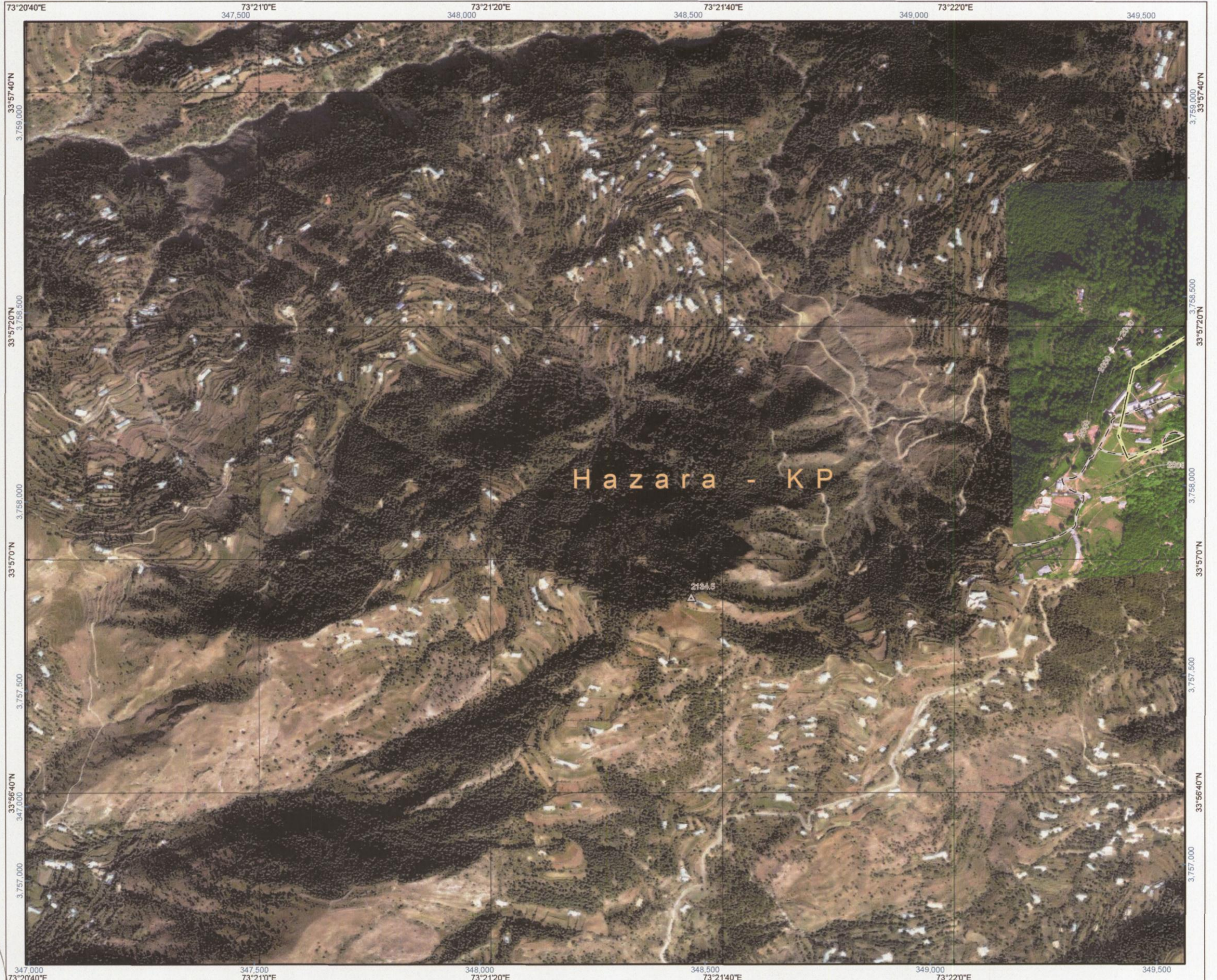
**Map Legend**

- Pillar Mark
- Forest Boundary
- Forest Bench Mark
- Ambiguity Area
- Sehadda
- Included Chak
- Spot Height (m)
- Murree Forest Division
- Road
- Water Channel/Nullah
- Contour (m)  
Contour interval: 50m (164 ft)
- Water Pond/Tank
- Encroachment

**Map Credits**

**Map Produced by:** GIS Laboratory, WWF - Pakistan in February, 2013

**Copyrights:**  
 It is an offence under the Copyright Act to make and issue any copy or copies of this map or any part of this map with or without alterations and additions, unless the prior written permission of the concerned department has been obtained.



**Divisional Forest Officer**  
 Murree Forest Division  
 Punjab Forest Department



**Officer-in-Charge**  
 No. 4 Party,  
 Survey of Pakistan, Murree



**Tehsildar Murree**  
 Punjab Revenue Department



**Manager GIS**  
 GIS Laboratory  
 World Wide Fund for Nature - Pakistan



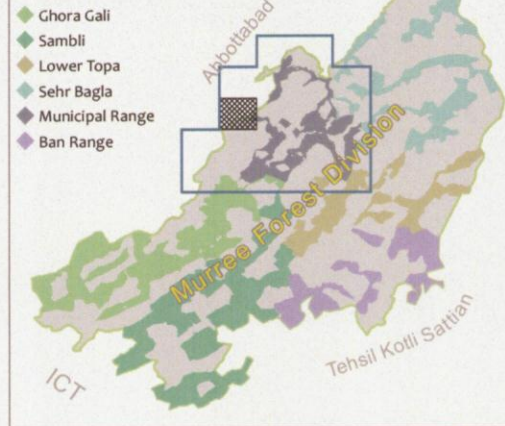


### Map Title

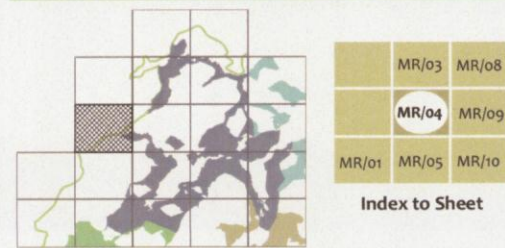
GIS BASED BOUNDARY DELINEATION OF MURREE FOREST DIVISION INCLUDING THE ENCROACHED FOREST SECTIONS  
 MAP ID : MR/04 (1<sup>st</sup> EDITION 2013)  
 MUNICIPAL FOREST RANGE

### Map Locator

#### Forest Sub Division/Range



### Map Index



### Map Scale & Coordinate System

**Reference Scale:** 1:10,000 on A3 size paper  
 1 inch ~ 278 yards or 1 centimetre ~ 100 metres  
**Coordinate System:** GCS WGS 1984  
 Datum: WGS 1984  
**Grids and Graticule:**  
 Geographic Grid: WGS 1984  
 Value in: DD° MM' SS"  
 Metric Grid: UTM Zone 43S  
 Value in: Metres



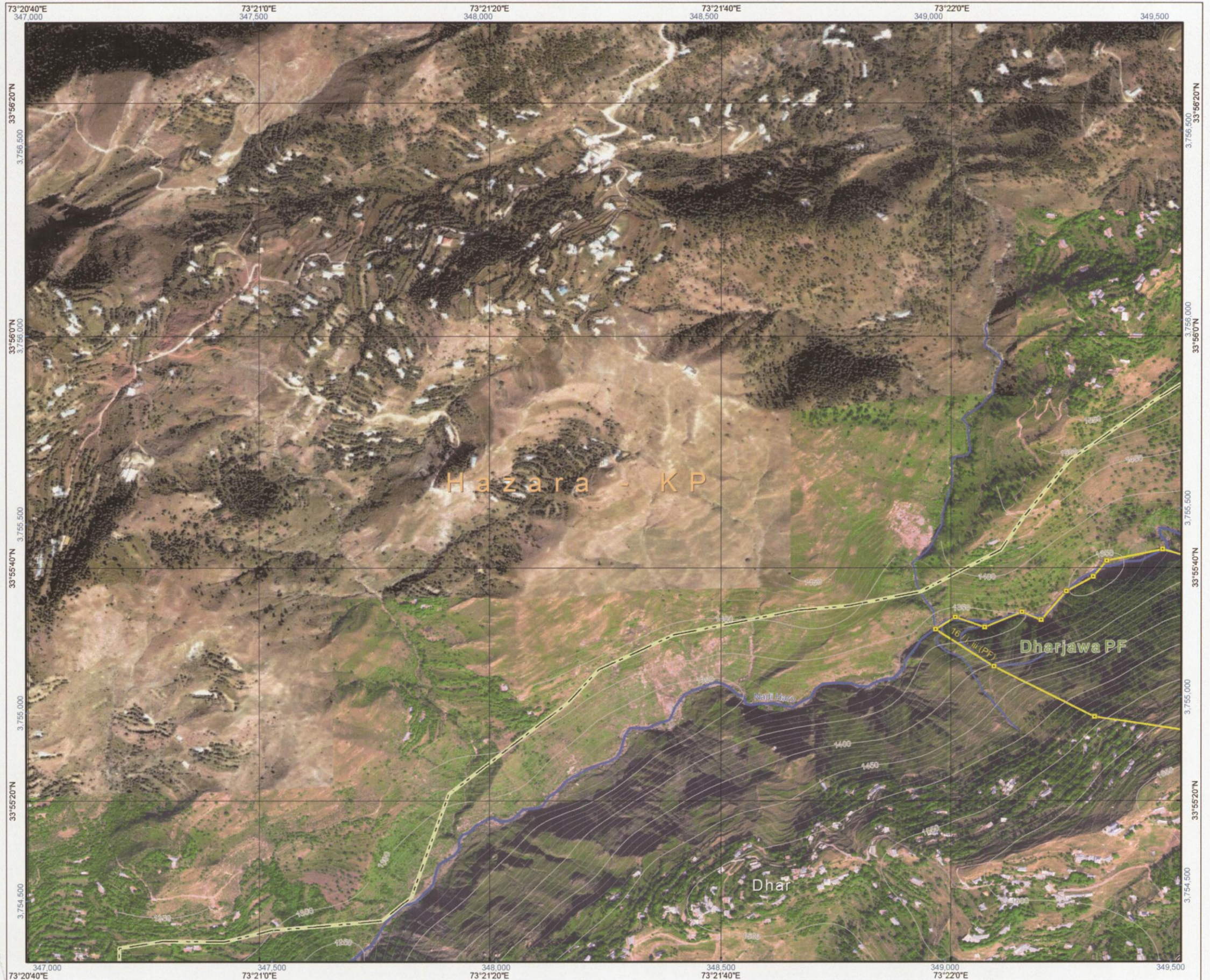
### Map Legend

- Pillar Mark
- Forest Boundary
- Forest Bench Mark
- Ambiguity Area
- Sehadda
- Included Chak
- Spot Height (m)
- Murree Forest Division
- Road
- Water Channel/Nullah
- Contour (m)  
Contour interval: 50m (164 ft)
- Water Pond/Tank
- Encroachment

### Map Credits

**Map Produced by:** GIS Laboratory, WWF - Pakistan in February, 2013

**Copyrights:**  
 It is an offence under the Copyright Act to make and issue any copy or copies of this map or any part of this map with or without alterations and additions, unless the prior written permission of the concerned department has been obtained.



**Divisional Forest Officer**  
 Murree Forest Division  
 Punjab Forest Department



**Officer-in-Charge**  
 No. 4 Party,  
 Survey of Pakistan, Murree



**Tensildar Murree**  
 Punjab Revenue Department



**Manager GIS**  
 GIS Laboratory  
 World Wide Fund for Nature - Pakistan





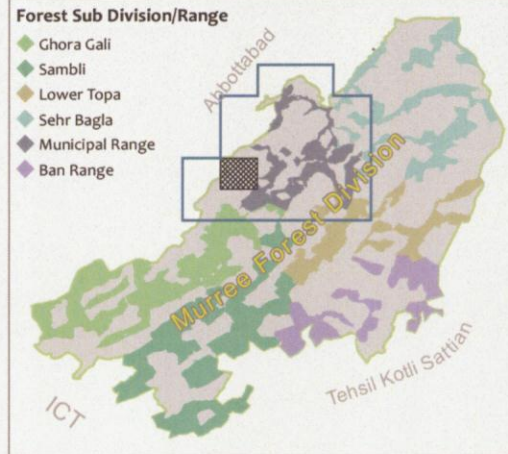
### Map Title

GIS BASED BOUNDARY DELINEATION OF MURREE FOREST DIVISION INCLUDING THE ENCROACHED FOREST SECTIONS  
 MAP ID : MR/05 (1<sup>ST</sup> EDITION 2013)  
 MUNICIPAL FOREST RANGE

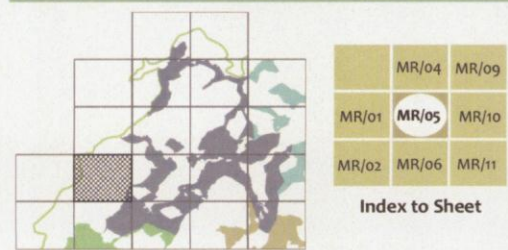
### Map Locator

#### Forest Sub Division/Range

- ◆ Ghora Gali
- ◆ Sambli
- ◆ Lower Topa
- ◆ Sehr Bagla
- ◆ Municipal Range
- ◆ Ban Range

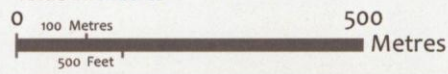


### Map Index



### Map Scale & Coordinate System

**Reference Scale:** 1:10,000 on A3 size paper  
 1 inch ~ 278 yards or 1 centimetre ~ 100 metres  
**Coordinate System:** GCS WGS 1984  
 Datum: WGS 1984  
**Grids and Graticule:**  
 Geographic Grid: WGS 1984  
 Value in: DD° MM' SS"  
 Metric Grid: UTM Zone 43S  
 Value in: Metres



### Map Legend

- Pillar Mark
- Forest Bench Mark
- ▭ Sehadda
- ▲ Spot Height (m)
- Road
- Contour (m)  
Contour interval: 50m (164 ft)
- Forest Boundary
- Ambiguity Area
- Included Chak
- Murree Forest Division
- Water Channel/Nullah
- Water Pond/Tank
- Encroachment

### Map Credits

**Map Produced by:** GIS Laboratory, WWF - Pakistan in February, 2013

**Copyrights:**  
 It is an offence under the Copyright Act to make and issue any copy or copies of this map or any part of this map with or without alterations and additions, unless the prior written permission of the concerned department has been obtained.



**Divisional Forest Officer**  
 Murree Forest Division  
 Punjab Forest Department



**Officer-in-Charge**  
 No. 4 Party,  
 Survey of Pakistan, Murree



**Tehsildar Murree**  
 Punjab Revenue Department



**Manager GIS**  
 GIS Laboratory  
 World Wide Fund for Nature - Pakistan





**Map Title**

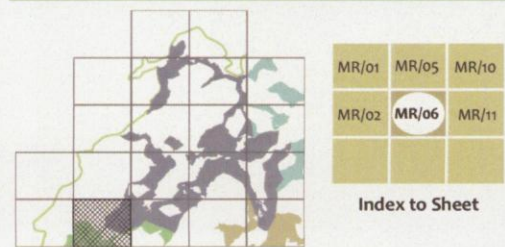
GIS BASED BOUNDARY DELINEATION OF MURREE FOREST DIVISION INCLUDING THE ENCLOSED FOREST SECTIONS  
 MAP ID : MR/06 (1<sup>st</sup> EDITION 2013)  
 MUNICIPAL FOREST RANGE

**Map Locator**

**Forest Sub Division/Range**



**Map Index**



**Map Scale & Coordinate System**

**Reference Scale:** 1:10,000 on A3 size paper  
 1 inch ~ 278 yards or 1 centimetre ~ 100 metres  
**Coordinate System:** GCS WGS 1984  
 Datum: WGS 1984  
**Grids and Graticule:**  
 Geographic Grid: WGS 1984  
 Value in: DD° MM' SS"  
 Metric Grid: UTM Zone 43S  
 Value in: Metres



**Map Legend**

- Pillar Mark
  - Forest Boundary
  - Forest Bench Mark
  - Ambiguity Area
  - Sehadda
  - Included Chak
  - Spot Height (m)
  - Murree Forest Division
  - Road
  - Water Channel/Nullah
  - Water Pond/Tank
  - Contour (m)
  - Encroachment
- Contour interval: 50m (164 ft)

**Map Credits**

Map Produced by: GIS Laboratory, WWF - Pakistan in February, 2013

Copyrights:  
 It is an offence under the Copyright Act to make and issue any copy or copies of this map or any part of this map with or without alterations and additions, unless the prior written permission of the concerned department has been obtained.



**Divisional Forest Officer**  
 Murree Forest Division  
 Punjab Forest Department



**Officer-in-Charge**  
 No. 4 Party,  
 Survey of Pakistan, Murree



**Tehsildar Murree**  
 Punjab Revenue Department



**Manager GIS**  
 GIS Laboratory  
 World Wide Fund for Nature - Pakistan

*Usaid*





**Map Title**

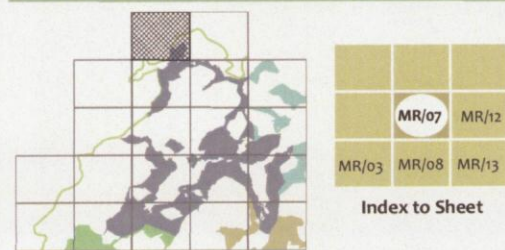
GIS BASED BOUNDARY DELINEATION OF MURREE FOREST DIVISION INCLUDING THE ENCROACHED FOREST SECTIONS  
 MAP ID : MR/07 (1<sup>st</sup> EDITION 2013)  
 MUNICIPAL FOREST RANGE

**Map Locator**

**Forest Sub Division/Range**

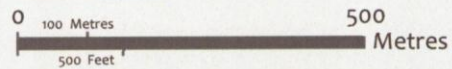


**Map Index**



**Map Scale & Coordinate System**

**Reference Scale:** 1:10,000 on A3 size paper  
 1 inch ~ 278 yards or 1 centimetre ~ 100 metres  
**Coordinate System:** GCS WGS 1984  
 Datum: WGS 1984  
**Grids and Graticule:**  
 Geographic Grid: WGS 1984  
 Value in: DD° MM' SS"  
 Metric Grid: UTM Zone 43S  
 Value in: Metres



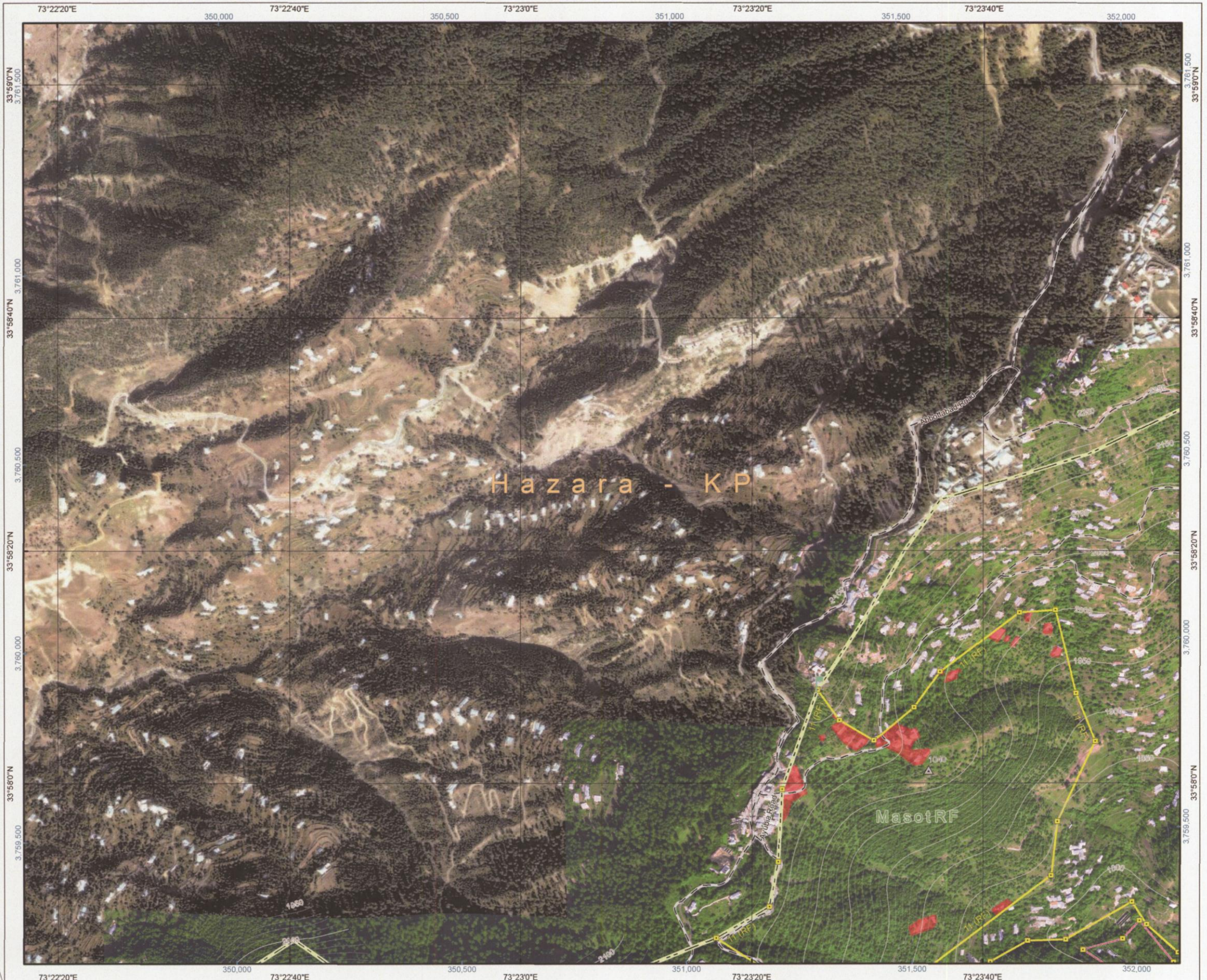
**Map Legend**

- Pillar Mark
- Forest Boundary
- Forest Bench Mark
- Ambiguity Area
- Sehadda
- Included Chak
- Spot Height (m)
- Murree Forest Division
- Road
- Water Channel/Nullah
- Water Pond/Tank
- Contour (m)  
Contour interval: 50m (164 ft)
- Encroachment

**Map Credits**

**Map Produced by:** GIS Laboratory, WWF - Pakistan in February, 2013

Copyrights:  
 It is an offence under the Copyright Act to make and issue any copy or copies of this map or any part of this map with or without alterations and additions, unless the prior written permission of the concerned department has been obtained.



**Divisional Forest Officer**  
 Murree Forest Division  
 Punjab Forest Department



**Officer-in-Charge**  
 No. 4 Party,  
 Survey of Pakistan, Murree



**Tehsildar Marree**  
 Punjab Revenue Department



**Manager GIS**  
 GIS Laboratory  
 World Wide Fund for Nature - Pakistan





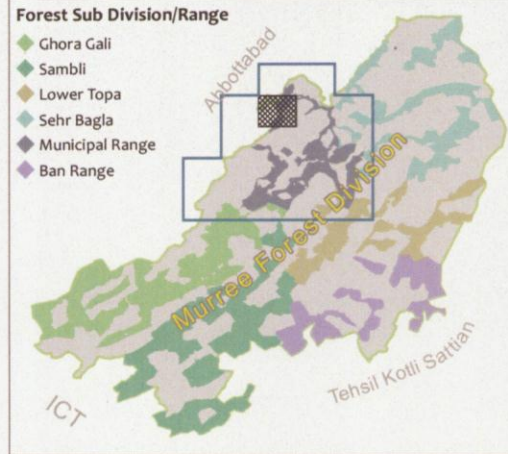
**Map Title**

GIS BASED BOUNDARY DELINEATION OF MURREE FOREST DIVISION INCLUDING THE ENCRANCED FOREST SECTIONS  
 MAP ID : MR/08 (1<sup>st</sup> EDITION 2013)  
 MUNICIPAL FOREST RANGE

**Map Locator**

**Forest Sub Division/Range**

- ◆ Ghora Gali
- ◆ Sambli
- ◆ Lower Topa
- ◆ Sehr Bagla
- ◆ Municipal Range
- ◆ Ban Range

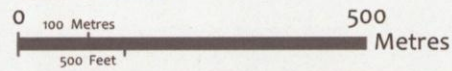


**Map Index**



**Map Scale & Coordinate System**

**Reference Scale:** 1:10,000 on A3 size paper  
 1 inch ~ 278 yards or 1 centimetre ~ 100 metres  
**Coordinate System:** GCS WGS 1984  
 Datum: WGS 1984  
**Grids and Graticule:**  
 Geographic Grid: WGS 1984  
 Value in: DD° MM' SS"  
 Metric Grid: UTM Zone 43S  
 Value in: Metres



**Map Legend**

- Pillar Mark
- Forest Bench Mark
- ▬ Sehadra
- ▲ Spot Height (m)
- Road
- Contour (m)  
Contour interval: 50m (164 ft)
- Forest Boundary
- Ambiguity Area
- Included Chak
- Murree Forest Division
- Water Channel/Nullah
- Water Pond/Tank
- Encroachment

**Map Credits**

**Map Produced by:** GIS Laboratory, WWF - Pakistan in February, 2013

Copyrights:  
 It is an offence under the Copyright Act to make and issue any copy or copies of this map or any part of this map with or without alterations and additions, unless the prior written permission of the concerned department has been obtained.



**Divisional Forest Officer**  
 Murree Forest Division  
 Punjab Forest Department



**Officer-in-Charge**  
 No. 4 Party,  
 Survey of Pakistan, Murree



**Tehsildar Murree**  
 Punjab Revenue Department



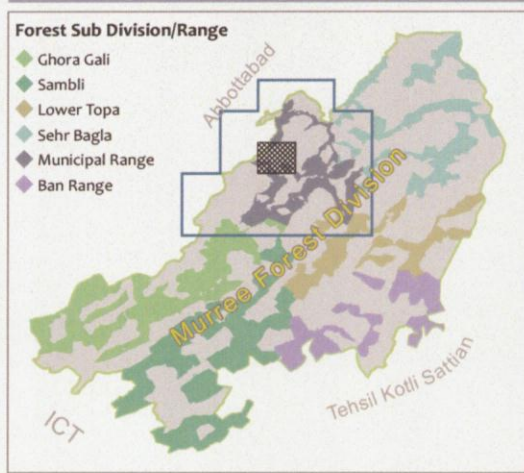
**Manager GIS**  
 GIS Laboratory  
 World Wide Fund for Nature - Pakistan



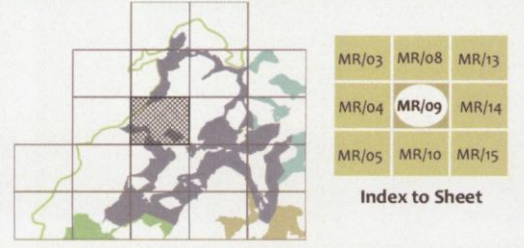


**Map Title**  
**GIS BASED BOUNDARY DELINEATION OF MURREE FOREST DIVISION INCLUDING THE ENCROACHED FOREST SECTIONS**  
**MAP ID : MR/09 (1<sup>st</sup> EDITION 2013)**  
**MUNICIPAL FOREST RANGE**

**Map Locator**



**Map Index**



**Map Scale & Coordinate System**

**Reference Scale:** 1:10,000 on A3 size paper  
 1 inch ~ 278 yards or 1 centimetre ~ 100 metres  
**Coordinate System:** GCS WGS 1984  
 Datum: WGS 1984  
**Grids and Graticule:**  
 Geographic Grid: WGS 1984  
 Value in: DD° MM' SS"  
 Metric Grid: UTM Zone 43S  
 Value in: Metres

**Map Legend**

- Pillar Mark
- Forest Bench Mark
- ▬ Sehadda
- ▲ Spot Height (m)
- Road
- Contour (m)
- Contour interval: 50m (164 ft)
- Forest Boundary
- Ambiguity Area
- Included Chak
- Murree Forest Division
- Water Channel/Nullah
- Water Pond/Tank
- Encroachment

**Map Credits**

**Map Produced by:** GIS Laboratory, WWF - Pakistan in February, 2013

**Copyrights:**  
 It is an offence under the Copyright Act to make and issue any copy or copies of this map or any part of this map with or without alterations and additions, unless the prior written permission of the concerned department has been obtained.



**Divisional Forest Officer**  
 Murree Forest Division  
 Punjab Forest Department



**Officer-in-Charge**  
 No. 4 Party,  
 Survey of Pakistan, Murree



**Tehsildar Murree**  
 Punjab Revenue Department



**Manager GIS**  
 GIS Laboratory  
 World Wide Fund for Nature - Pakistan



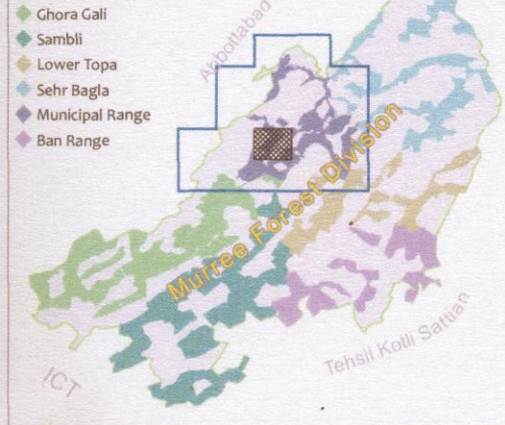


**Map Title**

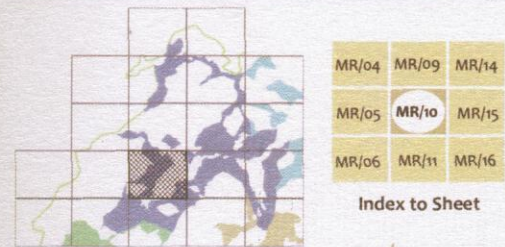
GIS BASED BOUNDARY DELINEATION OF MURREE FOREST DIVISION INCLUDING THE ENCROACHED FOREST SECTIONS  
 MAP ID : MR/10 (1<sup>ST</sup> EDITION 2013)  
 MUNICIPAL FOREST RANGE

**Map Locator**

**Forest Sub Division/Range**



**Map Index**



**Map Scale & Coordinate System**

Reference Scale: 1:10,000 on A3 size paper  
 1 inch ~ 278 yards or 1 centimetre ~ 100 metres  
 Coordinate System: GCS WGS 1984  
 Datum: WGS 1984  
 Grids and Graticule:  
 Geographic Grid: WGS 1984  
 Value in: DD° MM' SS"  
 Metric Grid: UTM Zone 43S  
 Value in: Metres



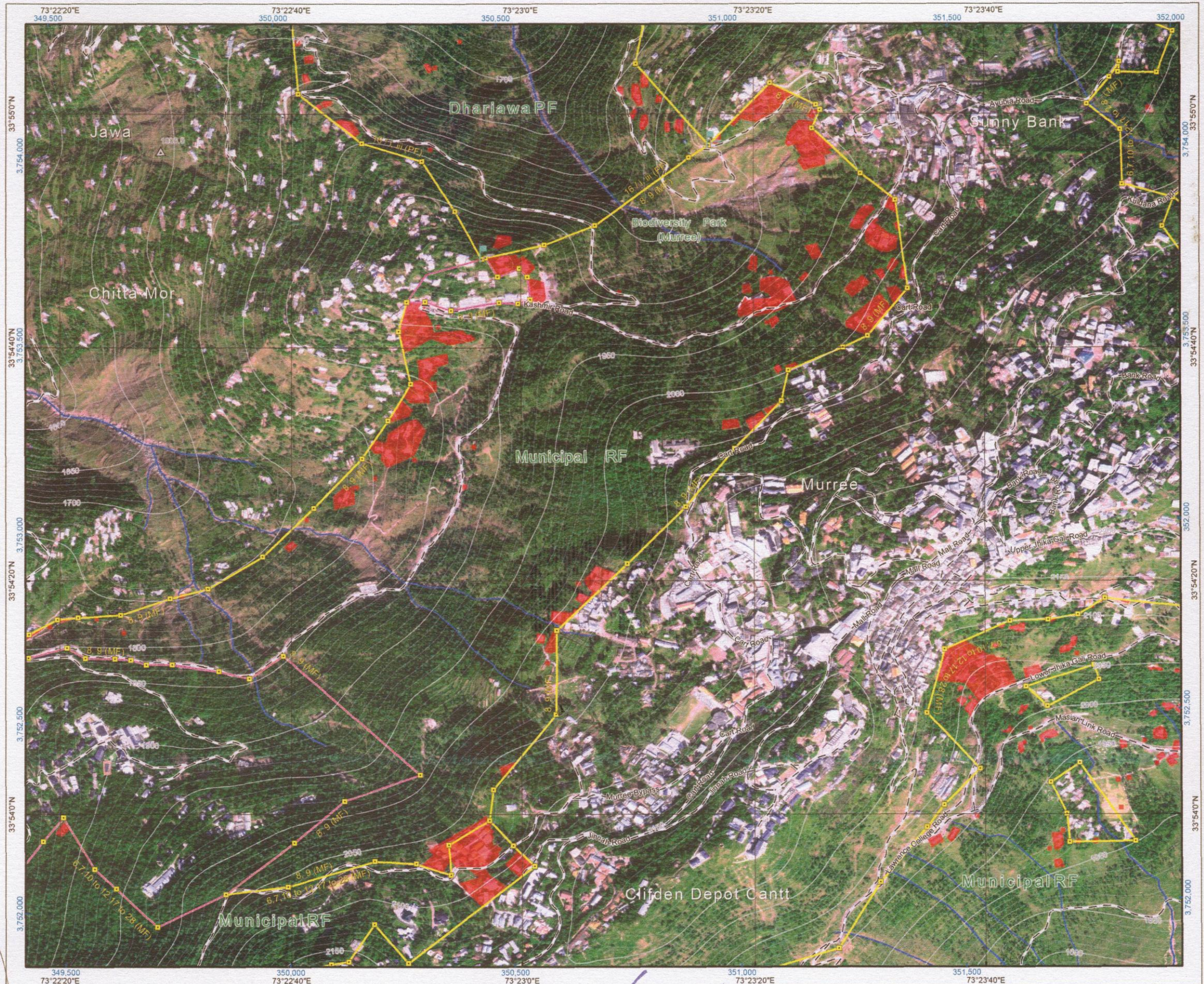
**Map Legend**

- Pillar Mark
  - Forest Boundary
  - Forest Bench Mark
  - Ambiguity Area
  - Included Chak
  - Sehadda
  - Murree Forest Division
  - Spot Height (m)
  - Water Channel/Nullah
  - Road
  - Water Pond/Tank
  - Contour (m)
  - Encroachment
- Contour interval: 50m (164 ft)

**Map Credits**

Map Produced by: GIS Laboratory, WWF - Pakistan in February, 2013

Copyrights:  
 It is an offence under the Copyright Act to make and issue any copy or copies of this map or any part of this map with or without alterations and additions, unless the prior written permission of the concerned department has been obtained.



**Divisional Forest Officer**  
 Murree Forest Division  
 Punjab Forest Department



**Officer-in-Charge**  
 No. 4 Party,  
 Survey of Pakistan, Murree



**Tehsildar Murree**  
 Punjab Revenue Department



**Manager GIS**  
 GIS Laboratory  
 World Wide Fund for Nature - Pakistan





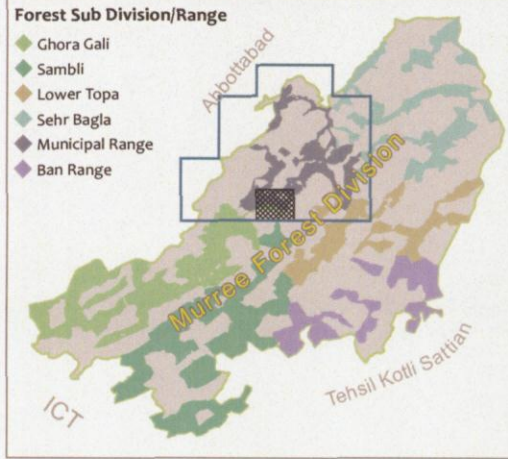
**Map Title**

GIS BASED BOUNDARY DELINEATION OF MURREE FOREST DIVISION INCLUDING THE ENCREACHED FOREST SECTIONS  
 MAP ID : MR/11 (1<sup>ST</sup> EDITION 2013)  
 MUNICIPAL FOREST RANGE

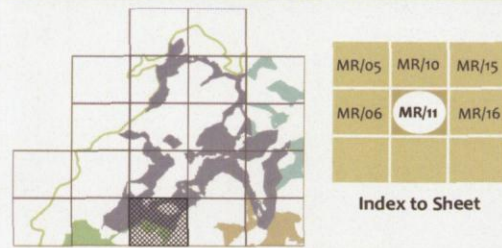
**Map Locator**

**Forest Sub Division/Range**

- ◆ Ghora Gali
- ◆ Sambli
- ◆ Lower Topa
- ◆ Sehr Bagla
- ◆ Municipal Range
- ◆ Ban Range



**Map Index**

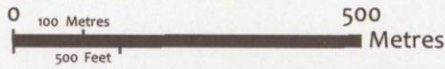


MR/05	MR/10	MR/15
MR/06	<b>MR/11</b>	MR/16

Index to Sheet

**Map Scale & Coordinate System**

**Reference Scale:** 1:10,000 on A3 size paper  
 1 inch ~ 278 yards or 1 centimetre ~ 100 metres  
**Coordinate System:** GCS WGS 1984  
 Datum: WGS 1984  
**Grids and Graticule:**  
 Geographic Grid: WGS 1984  
 Value in: DD° MM' SS"  
 Metric Grid: UTM Zone 43S  
 Value in: Metres



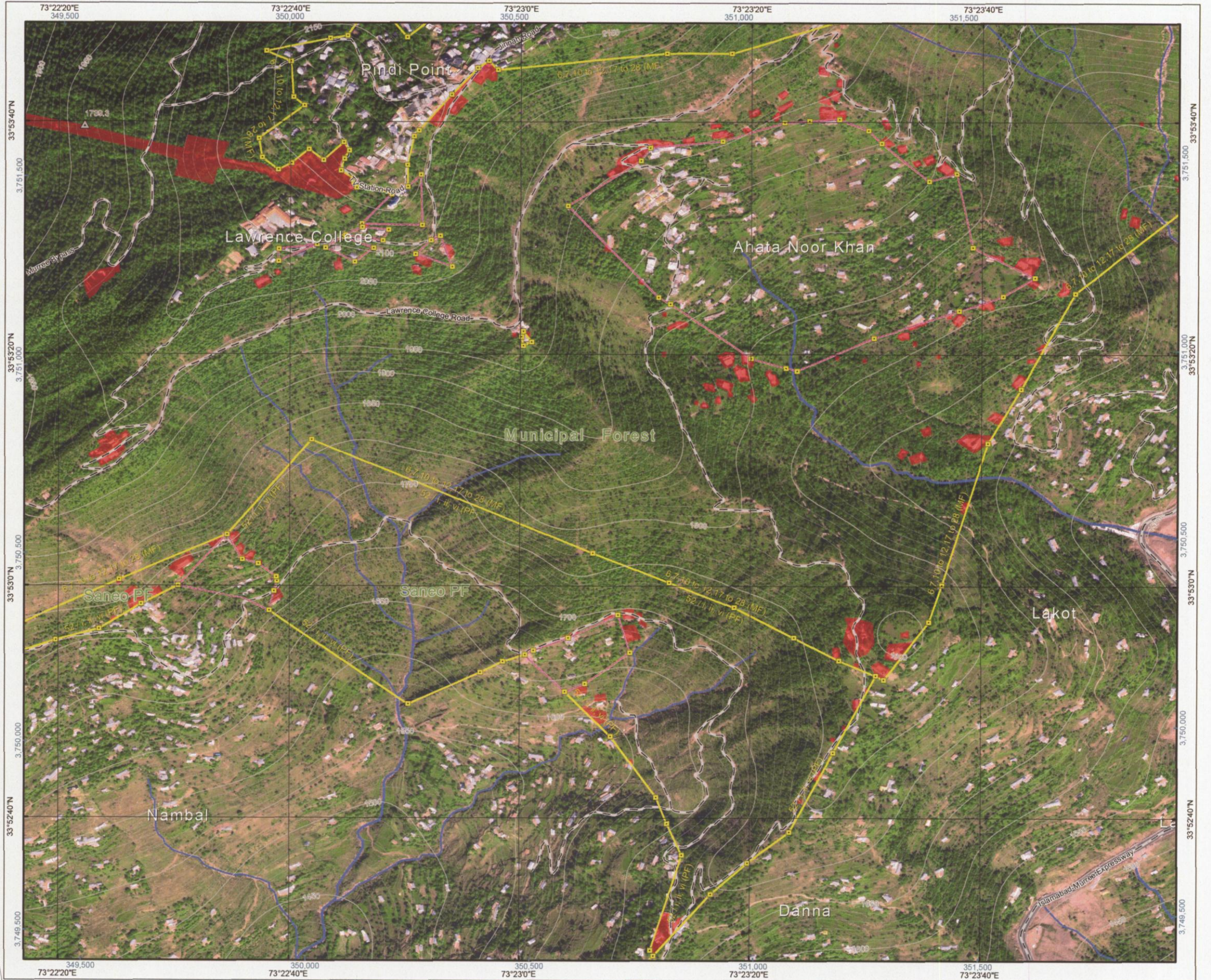
**Map Legend**

- Pillar Mark
- Forest Bench Mark
- ▭ Sehadda
- ▲ Spot Height (m)
- Road
- Contour (m)
- Contour interval: 50m (164 ft)
- Forest Boundary
- Ambiguity Area
- Included Chak
- Murree Forest Division
- Water Channel/Nullah
- Water Pond/Tank
- Encroachment

**Map Credits**

**Map Produced by:** GIS Laboratory, WWF - Pakistan in February, 2013

Copyrights:  
 It is an offence under the Copyright Act to make and issue any copy or copies of this map or any part of this map with or without alterations and additions, unless the prior written permission of the concerned department has been obtained.



**Divisional Forest Officer**  
 Murree Forest Division  
 Punjab Forest Department



**Officer-in-Charge**  
 No. 4 Party,  
 Survey of Pakistan, Murree



**Tehsildar Murree**  
 Punjab Revenue Department



**Manager GIS**  
 GIS Laboratory  
 World Wide Fund for Nature - Pakistan

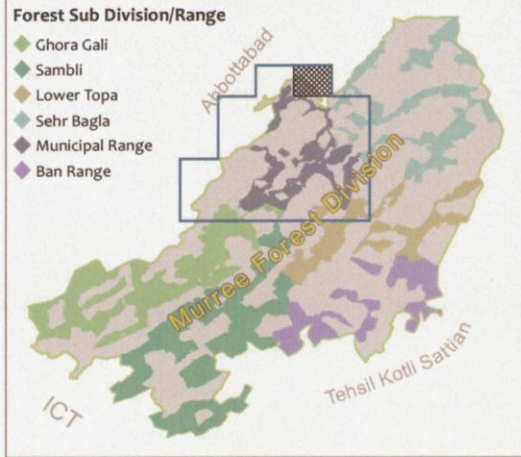




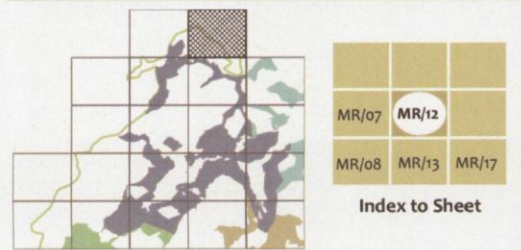
**Map Title**

GIS BASED BOUNDARY DELINEATION OF MURREE FOREST DIVISION INCLUDING THE ENCROACHED FOREST SECTIONS  
 MAP ID : MR/12 (1<sup>st</sup> EDITION 2013)  
 MUNICIPAL FOREST RANGE

**Map Locator**

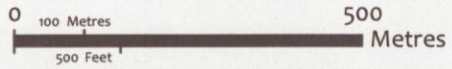


**Map Index**



**Map Scale & Coordinate System**

**Reference Scale:** 1:10,000 on A3 size paper  
 1 inch ~ 278 yards or 1 centimetre ~ 100 metres  
**Coordinate System:** GCS WGS 1984  
 Datum: WGS 1984  
**Grids and Graticule:**  
 Geographic Grid: WGS 1984  
 Value in: DD° MM' SS"  
 Metric Grid: UTM Zone 43S  
 Value in: Metres



**Map Legend**

- Pillar Mark
- Forest Boundary
- Forest Bench Mark
- Ambiguity Area
- Sehadda
- Included Chak
- Spot Height (m)
- Murree Forest Division
- Road
- Water Channel/Nullah
- Contour (m)  
Contour interval: 50m (164 ft)
- Water Pond/Tank
- Encroachment

**Map Credits**

**Map Produced by:** GIS Laboratory, WWF - Pakistan in February, 2013

**Copyrights:**  
 It is an offence under the Copyright Act to make and issue any copy or copies of this map or any part of this map with or without alterations and additions, unless the prior written permission of the concerned department has been obtained.



**Divisional Forest Officer**  
 Murree Forest Division  
 Punjab Forest Department



**Officer-in-Charge**  
 No. 4 Party,  
 Survey of Pakistan, Murree



**Tehsildar Murree**  
 Punjab Revenue Department



**Manager GIS**  
 GIS Laboratory  
 World Wide Fund for Nature - Pakistan

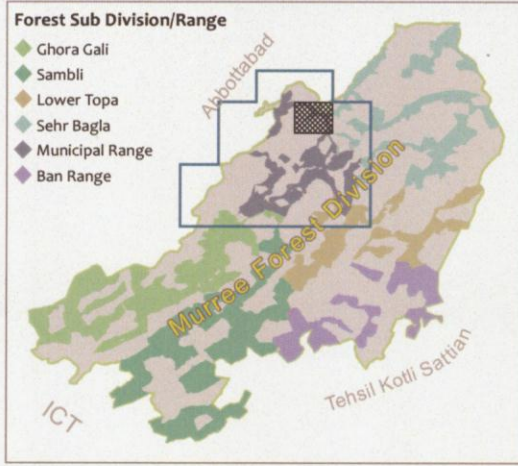




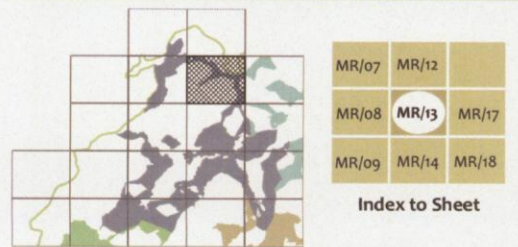
**Map Title**

GIS BASED BOUNDARY DELINEATION OF MURREE FOREST DIVISION INCLUDING THE ENCROACHED FOREST SECTIONS  
 MAP ID : MR/13 (1<sup>ST</sup> EDITION 2013)  
 MUNICIPAL FOREST RANGE

**Map Locator**



**Map Index**



**Map Scale & Coordinate System**

**Reference Scale:** 1:10,000 on A3 size paper  
 1 inch ~ 278 yards or 1 centimetre ~ 100 metres  
**Coordinate System:** GCS WGS 1984  
 Datum: WGS 1984  
**Grids and Graticule:**  
 Geographic Grid: WGS 1984  
 Value in: DD° MM' SS"  
 Metric Grid: UTM Zone 43S  
 Value in: Metres

**Map Legend**

- Pillar Mark
- Forest Boundary
- Forest Bench Mark
- Ambiguity Area
- Sehadda
- Included Chak
- Spot Height (m)
- Murree Forest Division
- Road
- Water Channel/Nullah
- Contour (m)  
Contour interval: 50m (164 ft)
- Water Pond/Tank
- Encroachment

**Map Credits**

**Map Produced by:** GIS Laboratory, WWF - Pakistan in February, 2013

**Copyrights:**  
 It is an offence under the Copyright Act to make and issue any copy or copies of this map or any part of this map with or without alterations and additions, unless the prior written permission of the concerned department has been obtained.



**Divisional Forest Officer**  
 Murree Forest Division  
 Punjab Forest Department



**Officer-in-Charge**  
 No. 4 Party,  
 Survey of Pakistan, Murree



**Tehsildar, Murree**  
 Punjab Revenue Department



**Manager GIS**  
 GIS Laboratory  
 World Wide Fund for Nature - Pakistan

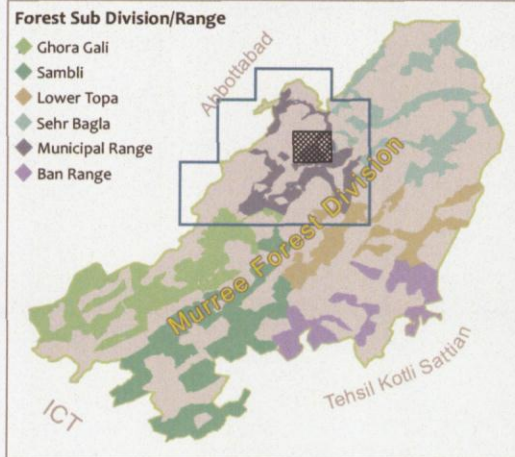




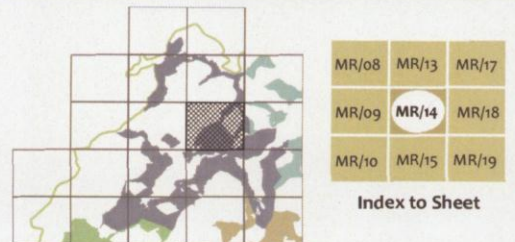
**Map Title**

GIS BASED BOUNDARY DELINEATION OF MURREE FOREST DIVISION INCLUDING THE ENCROACHED FOREST SECTIONS  
 MAP ID : MR/14 (1<sup>ST</sup> EDITION 2013)  
 MUNICIPAL FOREST RANGE

**Map Locator**

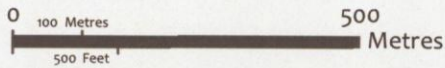


**Map Index**



**Map Scale & Coordinate System**

**Reference Scale:** 1:10,000 on A3 size paper  
 1 inch ~ 278 yards or 1 centimetre ~ 100 metres  
**Coordinate System:** GCS WGS 1984  
 Datum: WGS 1984  
**Grids and Graticule:**  
 Geographic Grid: WGS 1984  
 Value in: DD° MM' SS"  
 Metric Grid: UTM Zone 43S  
 Value in: Metres



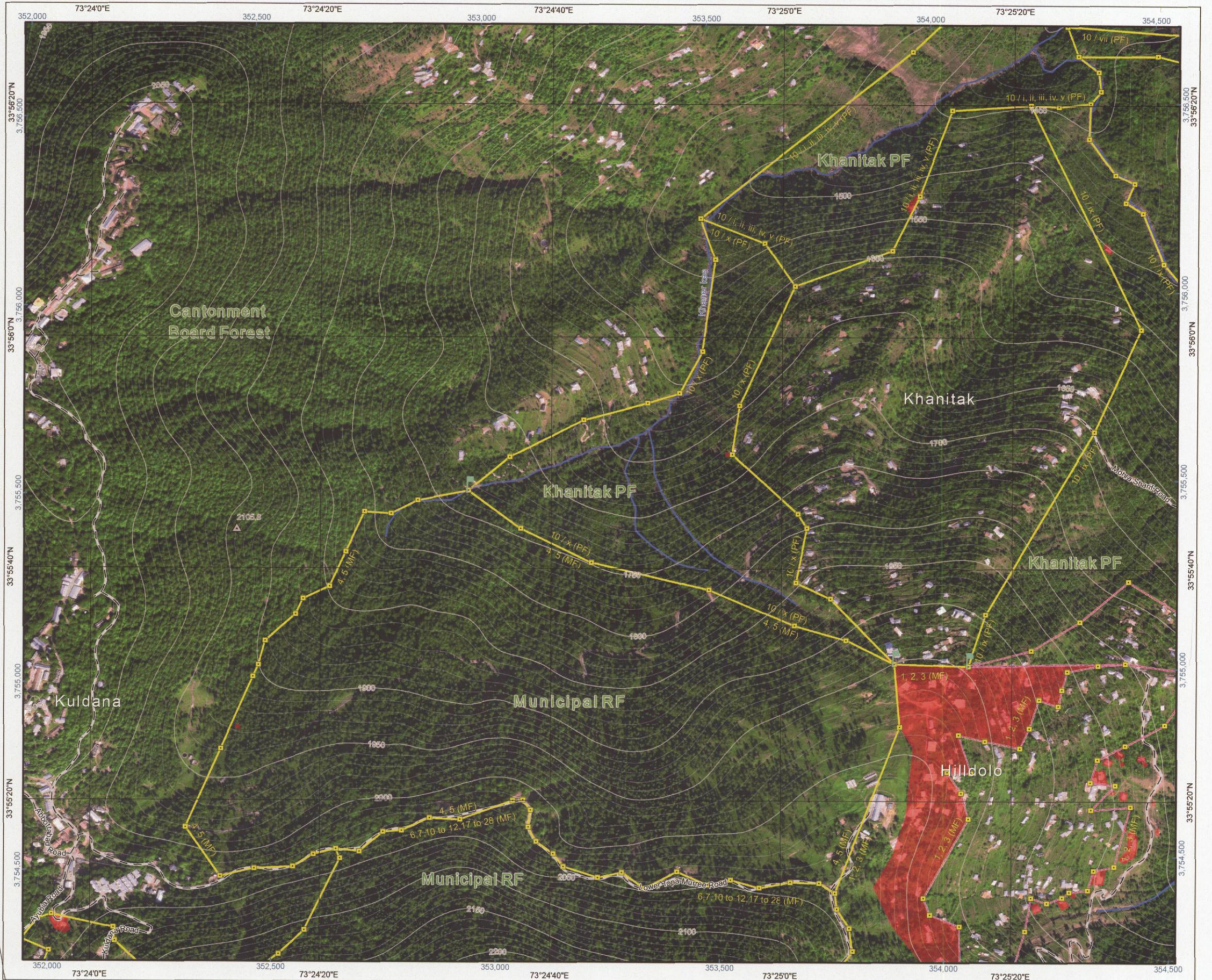
**Map Legend**

- Pillar Mark
- Forest Bench Mark
- ▬ Sehadha
- ▲ Spot Height (m)
- Road
- Contour (m)
- Contour interval: 50m (164 ft)
- Forest Boundary
- Ambiguity Area
- Included Chak
- Murree Forest Division
- Water Channel/Nullah
- Water Pond/Tank
- Encroachment

**Map Credits**

Map Produced by: GIS Laboratory, WWF - Pakistan in February, 2013

Copyrights:  
 It is an offence under the Copyright Act to make and issue any copy or copies of this map or any part of this map with or without alterations and additions, unless the prior written permission of the concerned department has been obtained.



**Divisional Forest Officer**  
 Murree Forest Division  
 Punjab Forest Department



**Officer-in-Charge**  
 No. 4 Party,  
 Survey of Pakistan, Murree



**Tehsildar Murree**  
 Punjab Revenue Department



**Manager GIS**  
 GIS Laboratory  
 World Wide Fund for Nature - Pakistan





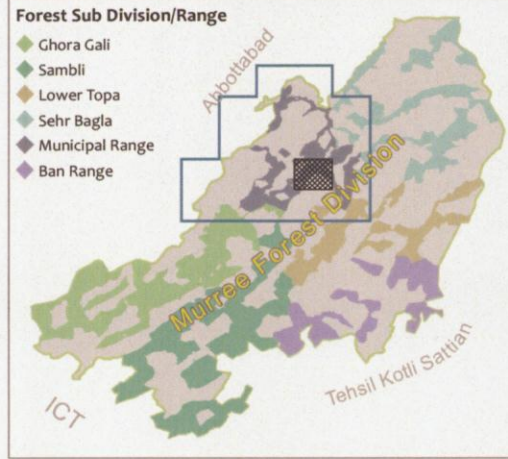
**Map Title**

GIS BASED BOUNDARY DELINEATION OF MURREE FOREST DIVISION INCLUDING THE ENCREACHED FOREST SECTIONS  
 MAP ID : MR/15 (1<sup>ST</sup> EDITION 2013)  
 MUNICIPAL FOREST RANGE

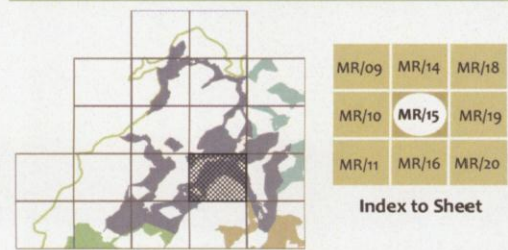
**Map Locator**

**Forest Sub Division/Range**

- ◆ Ghora Gali
- ◆ Sambli
- ◆ Lower Topa
- ◆ Sehr Bagla
- ◆ Municipal Range
- ◆ Ban Range



**Map Index**



**Map Scale & Coordinate System**

**Reference Scale:** 1:110,000 on A3 size paper  
 1 inch ~ 278 yards or 1 centimetre ~ 100 metres  
**Coordinate System:** GCS WGS 1984  
**Datum:** WGS 1984  
**Grids and Graticule:**  
 Geographic Grid: WGS 1984  
 Value in: DD° MM' SS"  
 Metric Grid: UTM Zone 43S  
 Value in: Metres



**Map Legend**

- Pillar Mark
- Forest Bench Mark
- ▭ Sehadha
- ▲ Spot Height (m)
- Road
- Contour (m)
- Contour interval: 50m (164 ft)
- Forest Boundary
- Ambiguity Area
- ▭ Included Chak
- Murree Forest Division
- Water Channel/Nullah
- Water Pond/Tank
- Encroachment

**Map Credits**

**Map Produced by:** GIS Laboratory, WWF - Pakistan in February, 2013

**Copyrights:**  
 It is an offence under the Copyright Act to make and issue any copy or copies of this map or any part of this map with or without alterations and additions, unless the prior written permission of the concerned department has been obtained.



**Divisional Forest Officer**  
 Murree Forest Division  
 Punjab Forest Department



**Officer-in-Charge**  
 No. 4 Party,  
 Survey of Pakistan, Murree



**Tehsildar Murree**  
 Punjab Revenue Department



**Manager GIS**  
 GIS Laboratory  
 World Wide Fund for Nature - Pakistan





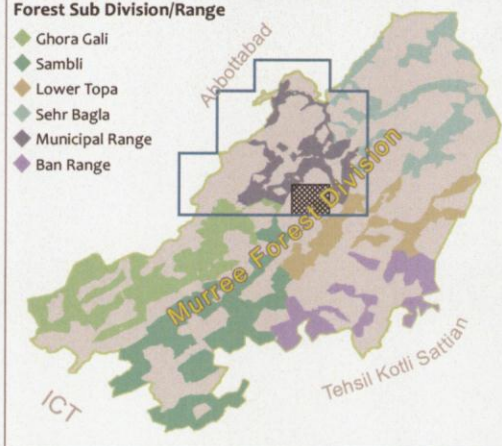
**Map Title**

GIS BASED BOUNDARY DELINEATION OF MURREE FOREST DIVISION INCLUDING THE ENCROACHED FOREST SECTIONS  
 MAP ID : MR/16 (1<sup>st</sup> EDITION 2013)  
 MUNICIPAL FOREST RANGE

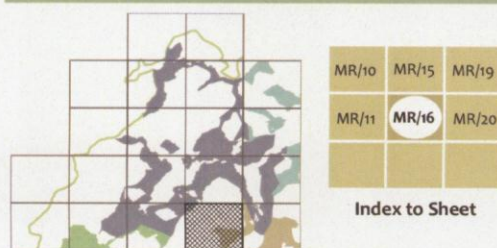
**Map Locator**

**Forest Sub Division/Range**

- ◆ Ghora Gali
- ◆ Sambli
- ◆ Lower Topa
- ◆ Sehr Bagla
- ◆ Municipal Range
- ◆ Ban Range

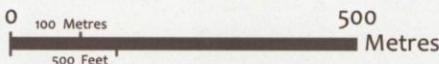


**Map Index**



**Map Scale & Coordinate System**

**Reference Scale:** 1:10,000 on A3 size paper  
 1 inch ~ 278 yards or 1 centimetre ~ 100 metres  
**Coordinate System:** GCS WGS 1984  
 Datum: WGS 1984  
**Grids and Graticule:**  
 Geographic Grid: WGS 1984  
 Value in: DD° MM' SS"  
 Metric Grid: UTM Zone 43S  
 Value in: Metres



**Map Legend**

- Pillar Mark
- Forest Bench Mark
- ▭ Sehadha
- ▲ Spot Height (m)
- Road
- Contour (m)
- Contour interval: 50m (164 ft)
- Forest Boundary
- Ambiguity Area
- Included Chak
- Murree Forest Division
- Water Channel/Nullah
- Water Pond/Tank
- Encroachment

**Map Credits**

Map Produced by: GIS Laboratory, WWF - Pakistan in February, 2013

Copyrights:  
 It is an offence under the Copyright Act to make and issue any copy or copies of this map or any part of this map with or without alterations and additions, unless the prior written permission of the concerned department has been obtained.



**Divisional Forest Officer**  
 Murree Forest Division  
 Punjab Forest Department



**Officer-in-Charge**  
 No. 4 Party,  
 Survey of Pakistan, Murree



**Tehsildar Murree**  
 Punjab Revenue Department



**Manager GIS**  
 GIS Laboratory  
 World Wide Fund for Nature - Pakistan





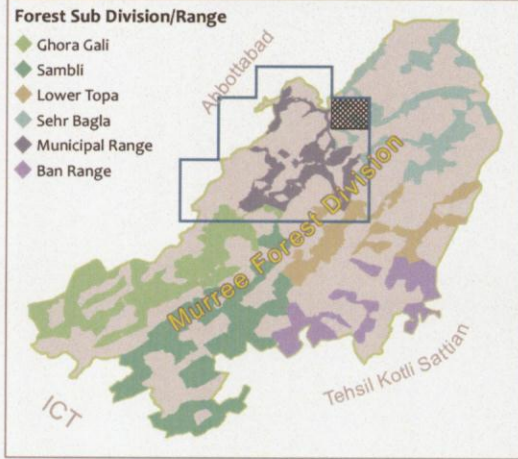
**Map Title**

GIS BASED BOUNDARY DELINEATION OF MURREE FOREST DIVISION INCLUDING THE ENCREACHED FOREST SECTIONS  
 MAP ID : MR/17 (1<sup>st</sup> EDITION 2013)  
 MUNICIPAL FOREST RANGE

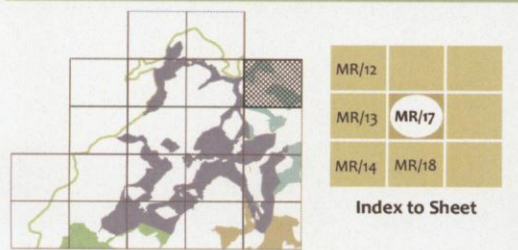
**Map Locator**

**Forest Sub Division/Range**

- ◆ Ghora Gali
- ◆ Sambli
- ◆ Lower Topa
- ◆ Sehr Bagla
- ◆ Municipal Range
- ◆ Ban Range



**Map Index**



**Map Scale & Coordinate System**

**Reference Scale:** 1:10,000 on A3 size paper  
 1 inch ~ 278 yards or 1 centimetre ~ 100 metres  
**Coordinate System:** GCS WGS 1984  
 Datum: WGS 1984  
**Grids and Graticule:**  
 Geographic Grid: WGS 1984  
 Value in: DD° MM' SS"  
 Metric Grid: UTM Zone 43S  
 Value in: Metres



**Map Legend**

- Pillar Mark
- Forest Boundary
- Forest Bench Mark
- Ambiguity Area
- Sehadda
- Included Chak
- ▲ Spot Height (m)
- Murree Forest Division
- Road
- Water Channel/Nullah
- Water Pond/Tank
- Contour (m)
- Encroachment
- Contour interval: 50m (164 ft)

**Map Credits**

**Map Produced by:** GIS Laboratory, WWF - Pakistan in February, 2013

**Copyrights:**  
 It is an offence under the Copyright Act to make and issue any copy or copies of this map or any part of this map with or without alterations and additions, unless the prior written permission of the concerned department has been obtained.



**Divisional Forest Officer**  
 Murree Forest Division  
 Punjab Forest Department



**Officer-in-Charge**  
 No. 4 Party,  
 Survey of Pakistan, Murree



**Tehsildar Murree**  
 Punjab Revenue Department



**Manager GIS**  
 GIS Laboratory  
 World Wide Fund for Nature - Pakistan





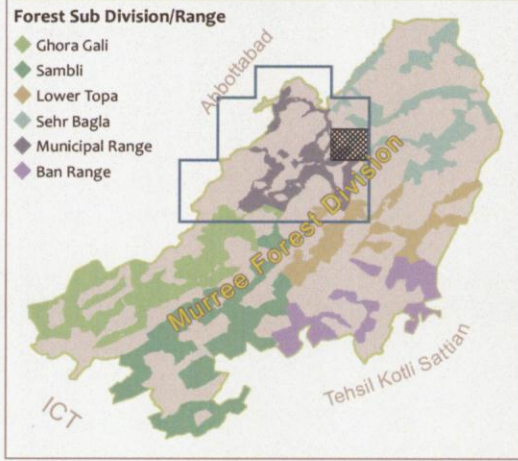
**Map Title**

GIS BASED BOUNDARY DELINEATION OF MURREE FOREST DIVISION INCLUDING THE ENCROACHED FOREST SECTIONS  
 MAP ID : MR/18 (1<sup>st</sup> EDITION 2013)  
 MUNICIPAL FOREST RANGE

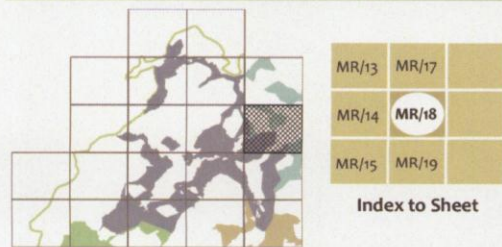
**Map Locator**

**Forest Sub Division/Range**

- ◆ Ghora Gali
- ◆ Sambli
- ◆ Lower Topa
- ◆ Sehr Bagla
- ◆ Municipal Range
- ◆ Ban Range

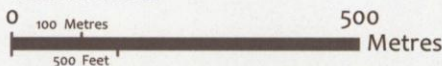


**Map Index**



**Map Scale & Coordinate System**

**Reference Scale:** 1:10,000 on A3 size paper  
 1 inch ~ 278 yards or 1 centimetre ~ 100 metres  
**Coordinate System:** GCS WGS 1984  
 Datum: WGS 1984  
**Grids and Graticule:**  
 Geographic Grid: WGS 1984  
 Value in: DD° MM' SS"  
 Metric Grid: UTM Zone 43S  
 Value in: Metres



**Map Legend**

- Pillar Mark
- Forest Bench Mark
- ▭ Sehadha
- ▲ Spot Height (m)
- Road
- Contour (m)
- Contour interval: 50m (164 ft)
- Forest Boundary
- Ambiguity Area
- Included Chak
- Murree Forest Division
- Water Channel/Nullah
- Water Pond/Tank
- Encroachment

**Map Credits**

**Map Produced by:** GIS Laboratory, WWF - Pakistan in February, 2013

**Copyrights:**  
 It is an offence under the Copyright Act to make and issue any copy or copies of this map or any part of this map with or without alterations and additions, unless the prior written permission of the concerned department has been obtained.



**Divisional Forest Officer**  
 Murree Forest Division  
 Punjab Forest Department



**Officer-in-Charge**  
 No. 4 Party,  
 Survey of Pakistan, Murree



**Tehsildar Murree**  
 Punjab Revenue Department



**Manager GIS**  
 GIS Laboratory  
 World Wide Fund for Nature - Pakistan



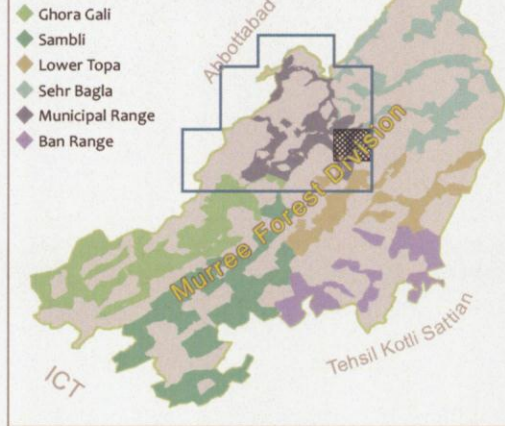


**Map Title**

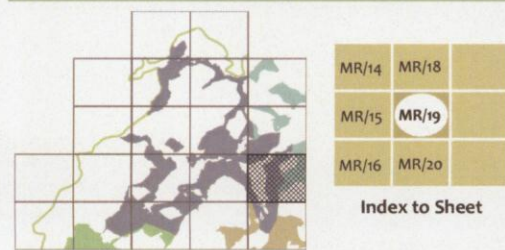
GIS BASED BOUNDARY DELINEATION OF MURREE FOREST DIVISION INCLUDING THE ENCRANCED FOREST SECTIONS  
 MAP ID : MR/19 (1<sup>st</sup> EDITION 2013)  
 MUNICIPAL FOREST RANGE

**Map Locator**

**Forest Sub Division/Range**

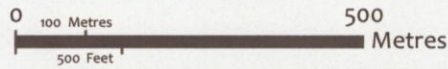


**Map Index**



**Map Scale & Coordinate System**

**Reference Scale:** 1:10,000 on A3 size paper  
 1 inch ~ 278 yards or 1 centimetre ~ 100 metres  
**Coordinate System:** GCS WGS 1984  
 Datum: WGS 1984  
**Grids and Graticule:**  
 Geographic Grid: WGS 1984  
 Value in: DD° MM' SS"  
 Metric Grid: UTM Zone 43S  
 Value in: Metres



**Map Legend**

- Pillar Mark
- Forest Boundary
- Forest Bench Mark
- Ambiguity Area
- Sehadda
- Included Chak
- Spot Height (m)
- Murree Forest Division
- Road
- Water Channel/Nullah
- Water Pond/Tank
- Contour (m)  
Contour interval: 50m (164 ft)
- Encroachment

**Map Credits**

**Map Produced by:** GIS Laboratory, WWF - Pakistan in February, 2013

**Copyrights:**  
 It is an offence under the Copyright Act to make and issue any copy or copies of this map or any part of this map with or without alterations and additions, unless the prior written permission of the concerned department has been obtained.



**Divisional Forest Officer**  
 Murree Forest Division  
 Punjab Forest Department



**Officer-in-Charge**  
 No. 4 Party,  
 Survey of Pakistan, Murree



**Tehsildar Murree**  
 Punjab Revenue Department



**Manager GIS**  
 GIS Laboratory  
 World Wide Fund for Nature - Pakistan





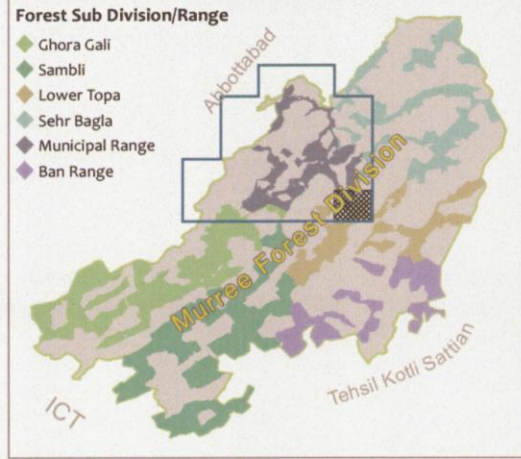
**Map Title**

GIS BASED BOUNDARY DELINEATION OF MURREE FOREST DIVISION INCLUDING THE ENCREACHED FOREST SECTIONS  
 MAP ID : MR/20 (1<sup>ST</sup> EDITION 2013)  
 MUNICIPAL FOREST RANGE

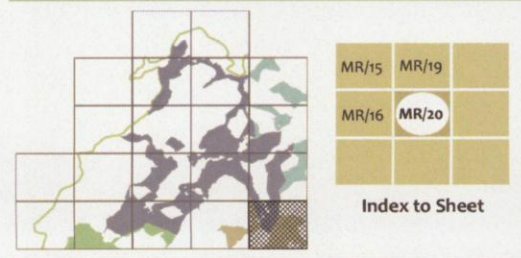
**Map Locator**

**Forest Sub Division/Range**

- ◆ Ghora Gali
- ◆ Sambli
- ◆ Lower Topa
- ◆ Sehr Bagla
- ◆ Municipal Range
- ◆ Ban Range

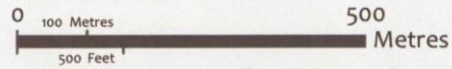


**Map Index**



**Map Scale & Coordinate System**

**Reference Scale:** 1:110,000 on A3 size paper  
 1 inch ~ 278 yards or 1 centimetre ~ 100 metres  
**Coordinate System:** GCS WGS 1984  
 Datum: WGS 1984  
**Grids and Graticule:**  
 Geographic Grid: WGS 1984  
 Value in: DD° MM' SS"  
 Metric Grid: UTM Zone 43S  
 Value in: Metres



**Map Legend**

- Pillar Mark
- Forest Bench Mark
- ▭ Sehadha
- ▲ Spot Height (m)
- Road
- Contour (m)
- Contour interval: 50m (164 ft)
- Forest Boundary
- Ambiguity Area
- ▭ Included Chak
- Murree Forest Division
- Water Channel/Nullah
- Water Pond/Tank
- Encroachment

**Map Credits**

**Map Produced by:** GIS Laboratory, WWF - Pakistan in February, 2013

**Copyrights:**  
 It is an offence under the Copyright Act to make and issue any copy or copies of this map or any part of this map with or without alterations and additions, unless the prior written permission of the concerned department has been obtained.



**Divisional Forest Officer**  
 Murree Forest Division  
 Punjab Forest Department



**Officer-in-Charge**  
 No. 4 Party,  
 Survey of Pakistan, Murree



**Tehsildar Murree**  
 Punjab Revenue Department



**Manager GIS**  
 GIS Laboratory  
 World Wide Fund for Nature - Pakistan

